



Let's shine

Properties

"We are told to let our light shine, and if it does, we won't need to tell anybody it does."

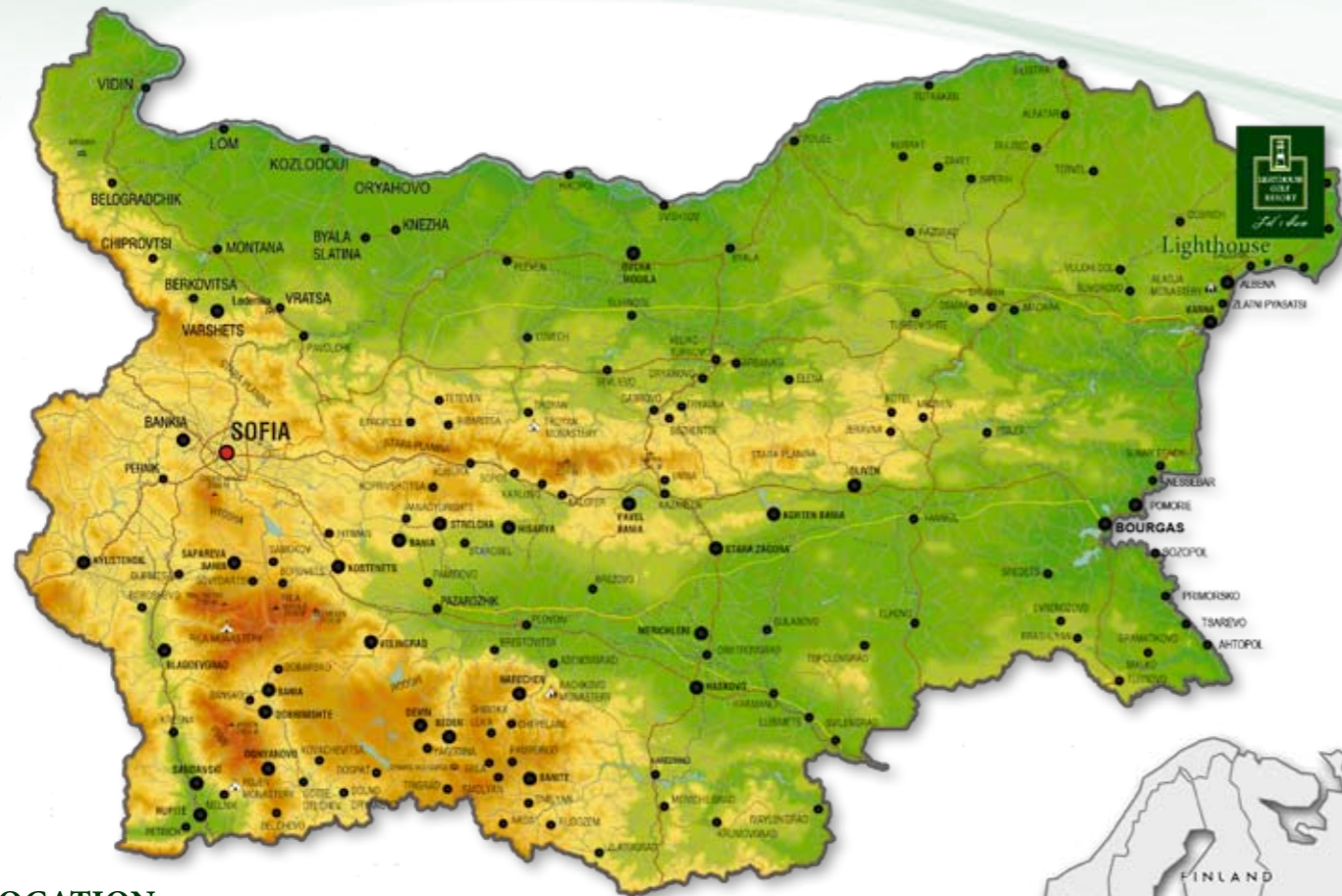
Dwight L. Moody

The Lighthouse Golf Resort & Spa is situated at the heart of Cape Kaliakra's 'Signature Golf Coast'. Here you will find a green land and stunning coast that is as bold as it is beautiful. Cape Kaliakra is a place defined by history, with vast natural treasures and diverse wildlife. The Lighthouse Resort like its name embodies the warm and friendly Bulgarian spirit, providing guests with the experience to navigate away from the stresses of everyday life. So come friends and let's shine.

The Lighthouse Golf Resort is a true European classic, from its distinctive design, signature golf courses, five star service and beautiful surroundings. But our greatest attribute is our people. From the moment you arrive, your every need is attended to with effortless skill and genuine Bulgarian hospitality. It is all part of our commitment to make every aspect of your stay memorable and rewarding.

At Cape Kaliakra, you will find endless ways to fill your days from golf on three of the finest courses in Europe, bathing at several private beaches to indulging in a pampering massage. As the sun sets over the coast, enjoy dining in our luxury restaurants or head into Varna for a taste of Bulgaria's nightlife at our largest coastal city. Then retreat to the luxury of a spacious guest room or our fully serviced villas, and let your dreams take flight.

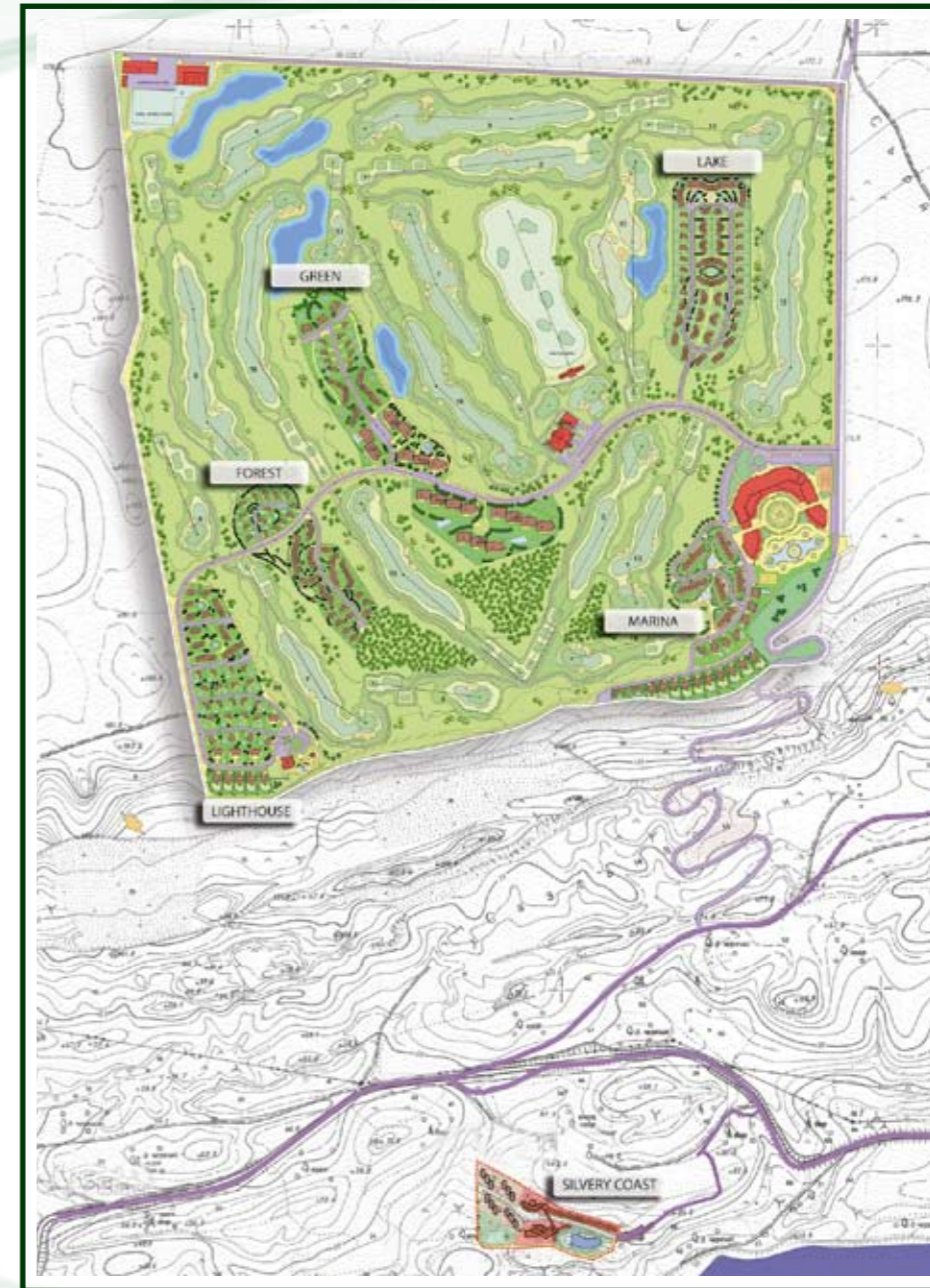




LOCATION:

Lighthouse Golf Resort is settled 7 km northern than Balchik. A town and seaside resort, situated terrace-like on a beautiful bay on the Black Sea, 25 minutes (31 km) from Varna International Airport. Balchik is the third most significant Bulgarian port after Varna and Bourgas, used for medium-size passenger and trade vessels.

Apart from the palace complex and the botanical garden, which is the biggest and most diverse on the Balkans, Balchik also appeals to tourists with its ancient spirit, reflected in steep pebbled streets and houses made of stone and adobe.



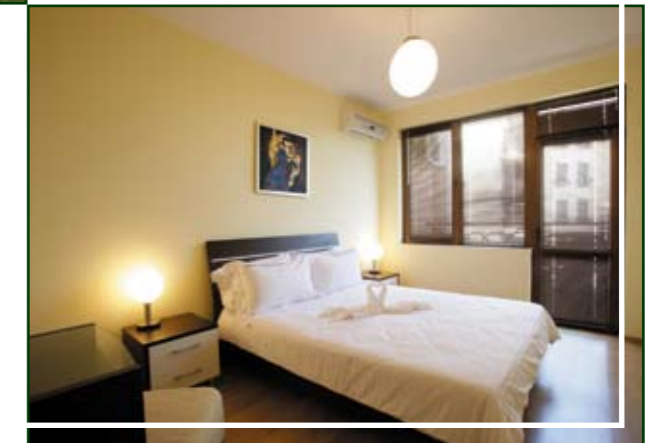
APARTMENTS

Green District is situated right in the heart of the complex next to the club house, along the 18th hole. Depending on your preferences in this district you can enjoy studios, one bedroom and luxury two-bedroom apartments, having unique view to the golf course or to the sea.

District has open swimming-pool, foodstuff shop, beauty studio, massage studio, fitness and relax hall. Here one can commit child to the cares provided in the children's centre, where entertainments never end.



FLOOR PLANS



SEMI-DETACHED HOUSES

If you consider that family houses are rather big for you, but you prefer house to apartment, we can offer you the best solution – house of optimal surface, incredible view and own yard! Semi-detached houses are located in Lake and Green in two variants – with two and three bedrooms, ensuring various panorama view and exposure.

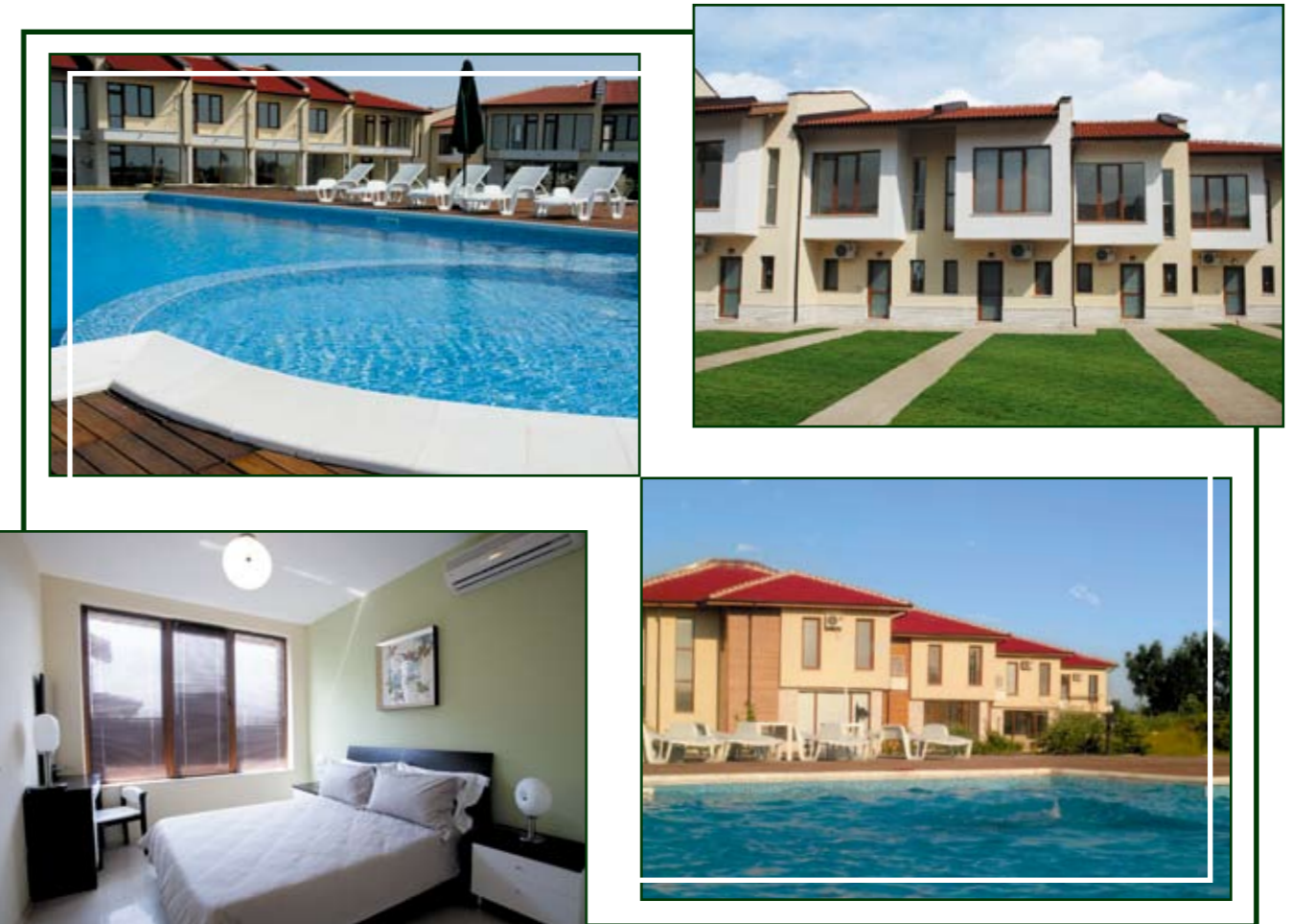
All houses are completely furnished and with planted yards. All owners have full access to all facilities of the complex, including the two open swimming-pools, located in Green and Forest District.

FLOOR PLANS

Type C1 House



Type C House



FAMILY VILLAS

In Lake and Green Districts you can find the dreamed family villa for best rest. Own swimming-pool, luxury furnishing and all this in the heart of the professional golf course next to the shore – what more can one dream about?

Each of the two types of family villas we offer is fully furnished, with own yard and swimming-pool. Here you can choose between view to the golf course or to two of the most beautiful lakes situated in the complex.

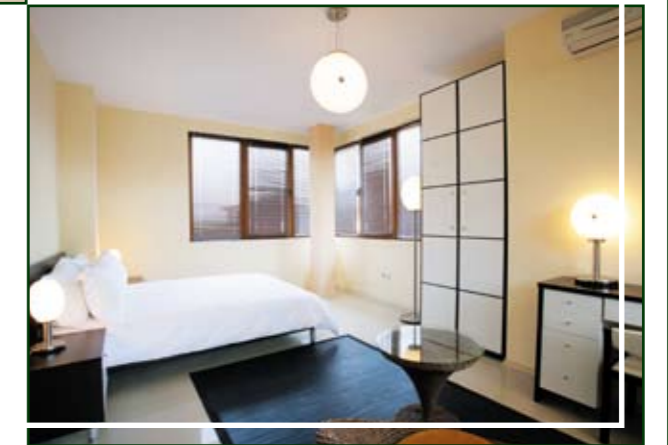


FLOOR PLANS

Type A House



Type G House

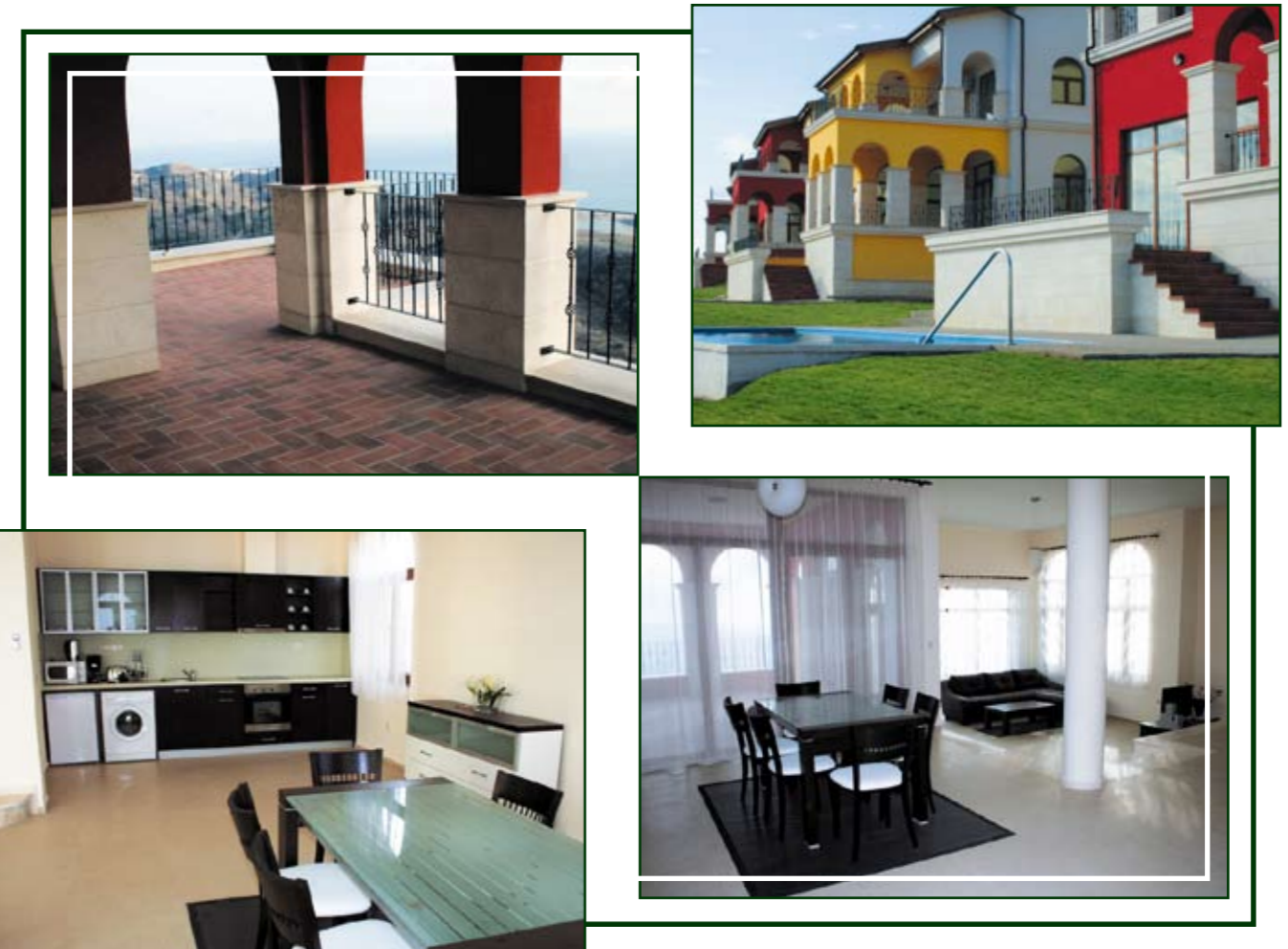
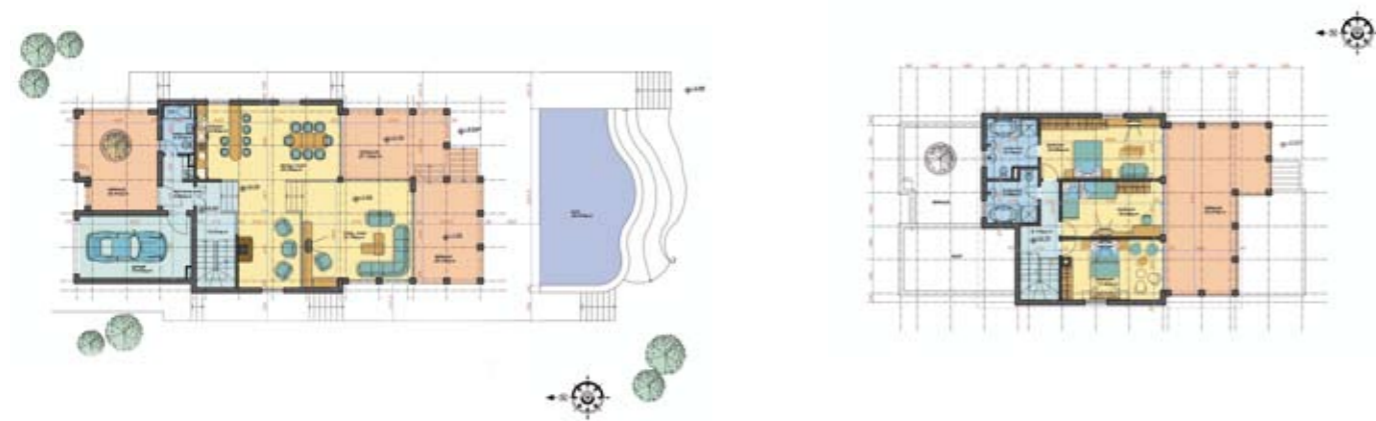


LUXURY VILLAS

If you dream of comfort, infinity swimming-pool with Jacuzzi and unique panorama view to the sea, the right choice for you is a house in Marina District. Situated just on the edge of the rocks, right above the sea, each of the houses in this district satisfies the preferences even of the most exacting client!

Each house has own yard, garage and unique infinity swimming-pool. Houses vary from three- to four bed-room houses. For each one we can propose to implement project for luxury, design furnishing.

FLOOR PLANS



GENERAL INFO

Along with the five star luxury hotel & spa center, Aqua Park, trading center, couples of restaurant and cafés the prestigious resort is including five private hamlets – Green, Lake, Marina, Forest and Lighthouse Districts. The prestigious resort includes a range of properties including apartments, semi-detached houses and detached villas of various sizes and unique design. All apartments, townhouses or villas finished to a high specification and incorporate modern local influence sympathetic to the surroundings. Interior designers put together contemporary and stylish neutral color schemes. Each style has a fresh and modern approach with attention to detail.

Outstanding amenities provided:

- ▷ 18 hole World Class Golf Course, par 71
- ▷ Beauty Saloon, Massage Studio, Relax zone, Fitness centre, Business and Convention center
- ▷ Outdoor heated adult and children's swimming pools
- ▷ State of the Art Sports Complex
- ▷ Kids club
- ▷ Private beach
- ▷ Sailing and wide variety of water sports facilities
- ▷ Yacht Marina nearby

Secluded residential areas benefiting from:

- ▷ A range of architectural design within the private Hamlets
- ▷ Luxury Studios, 1 & 2 bed apartments, semi detached homes with garden plots and luxurious detached villas
- ▷ Full property management & maintenance services:
- ▷ Unique all year round investment opportunities
- ▷ Unrivalled on-site facilities



Lighthouse Golf Resort & SPA
9000 Balchik Municipality; 5 km after Balchik at E87 road
Bulgaria, P.O. Box 9000

www.lighthousegolfresort.com